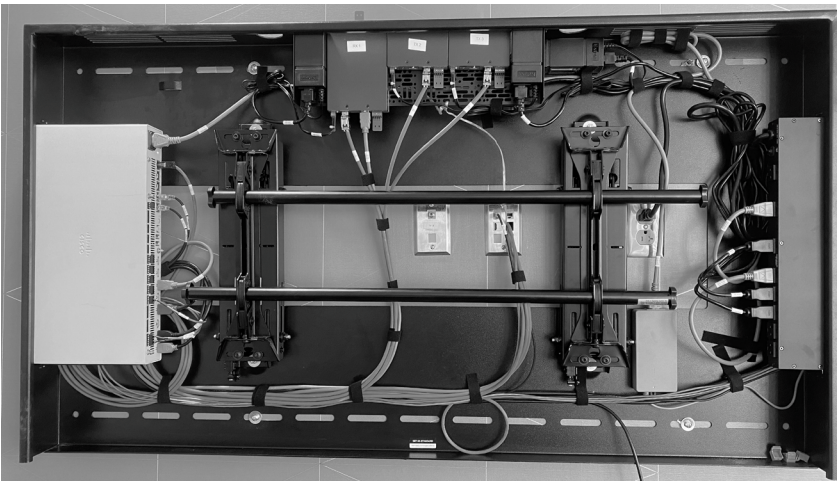


RoomReady Set

PRODUCT DATA SHEET

Key Features & Benefits:

- Eliminates the costly need to run cables through ceilings and walls to an AV rack.
- Provides external wall support and eliminates the need to install internal wall backing.**
- Multiple mounting holes allow Set to be centered on the wall regardless of stud location.
- Patented open design allows cooling by in-room HVAC, eliminates the need for active cooling system.
- Articulating mounts extend out for technicians to easily access equipment for servicing.



The RoomReady Set is a wall mounted AV rack that neatly houses audiovisual equipment behind the display. The RoomReady Set makes installation faster and easier, and all AV components are easily accessible for servicing. The RoomReady Set is available in 5 sizes to accommodate various solution needs. The Standard version features six rack units, and is intended for mounting above furniture. The Slim version can achieve ADA requirements of 4" (10.16cm) depth with the use of certain displays and is intended for use in egress pathways and with no furniture under the display.

TECHNICAL SPECIFICATIONS

	49"+ STANDARD	49"+ SLIM	65"+ STANDARD	65"+SLIM	84"+ STANDARD
DIMENSIONS (in)	42.27" X 23.87" X 4.67"	42.44" X 24.88" X 2.00"	56.38" X 31.25" X 4.75"	56.38" X 31.25" X 2.50"	70.00" X 42.00" X 4.75"
DIMENSIONS (mm)	1073.65 X 606.22 X 118.69	1077.91 X 631.83 X 50.80	1442.13 X 793.86 X 120.65	1431.93 X 793.75 X 63.50	1778.00 X 1066.80 X 120.65
NUMBER OF RACK UNITS	6	0	6	0	6
WEIGHT (lb)	35 lb	29 lb	49 lb	53 lb	95 lb
WEIGHT (kg)	15.9 kg	13.2 kg	22.3 kg	24.1 kg	43.1 kg
MIN # OF STUDS REQUIRED	2	2	3	3	3
DISPLAY SIZE COMPATIBILITY (IN)	49.00"- 65.00"	49.00"- 65.00"	65.00"-84.00"	65.00"-84.00"	84.00"-98.00"
DISPLAY SIZE COMPATIBILITY(M)	1m 24cm - 1m 65cm	1m 24cm - 1m 65cm	1m 63cm-2m 11cm	1m 63cm-2m 11cm	2m 11cm-2m 49cm
DISPLAY WEIGHT LIMIT (lb)	75 lb	100 lb	150 lb	125 lb	300 lb
DISPLAY WEIGHT LIMIT (kg)	34.1 kg	45.4 kg	68.1 kg	56.7 kg	136.1 kg
ADDITIONAL MOUNT REQUIRED	CHIEF TS218SU	CHIEF TS218SU OR MTTU	CHIEF LTM1U + FCAV1U	CHIEF TS525TU	PREMIER AM-300B
MATERIAL	11-GAUGE STEEL	11-GAUGE STEEL	11-GAUGE STEEL	11-GAUGE STEEL	11-GAUGE STEEL
FINISH	MATTE BLACK POWDER COAT	MATTE BLACK POWDER COAT	MATTE BLACK POWDER COAT	MATTE BLACK POWDER COAT	MATTE BLACK POWDER COAT
MFR PART #	SET-49-STANDARD	SET-49-SLIM V4	SET-65-STANDARD	SET-65-SLIM	SET-84-STANDARD
INSTALLATION	FAST & EASY	FAST & EASY	FAST & EASY	FAST & EASY	FAST & EASY
ADA COMPLIANT*	NO	YES*	NO	YES*	NO

*WITH THE USE OF CERTAIN DISPLAYS.

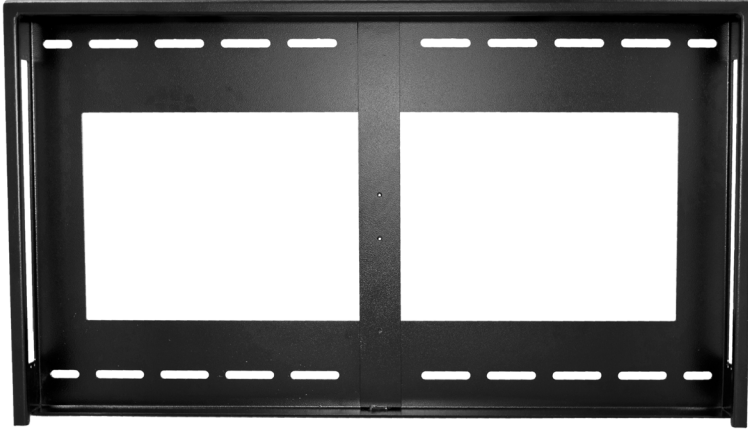
**WITH APPROVAL FROM SITE'S STRUCTURAL ENGINEER.

[R] roomready™
We innovate. You collaborate.

For more information
Visit us at www.vilsiglobal.com
Contact us by email: info@vilsiglobal.com

© 2023 RoomReady
ALL RIGHTS RESERVED
U.S. Patent No. 9,644,787
07/2023

ROOMREADY SET - 49"+ STANDARD MFR PART # SET-49-STANDARD



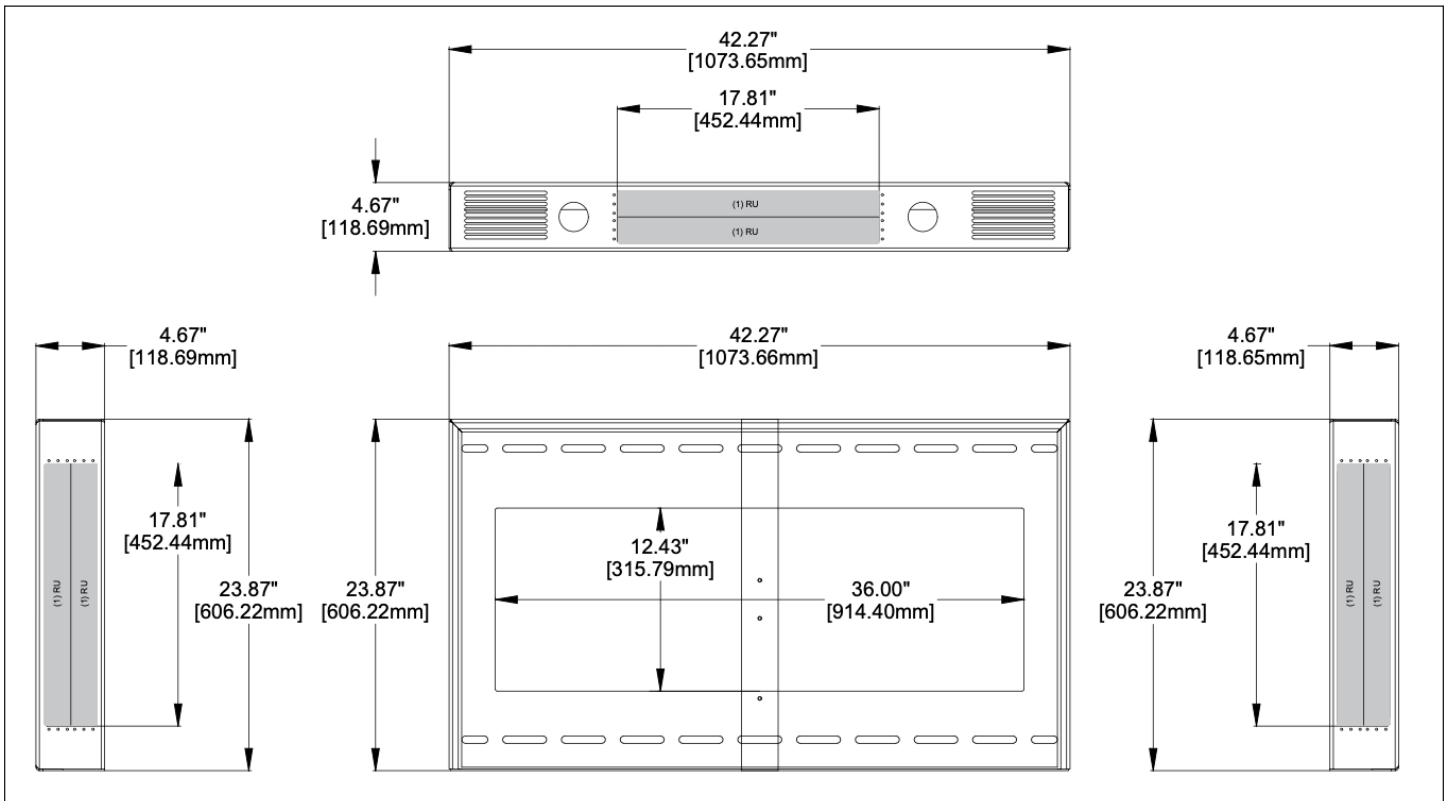
FEATURES:

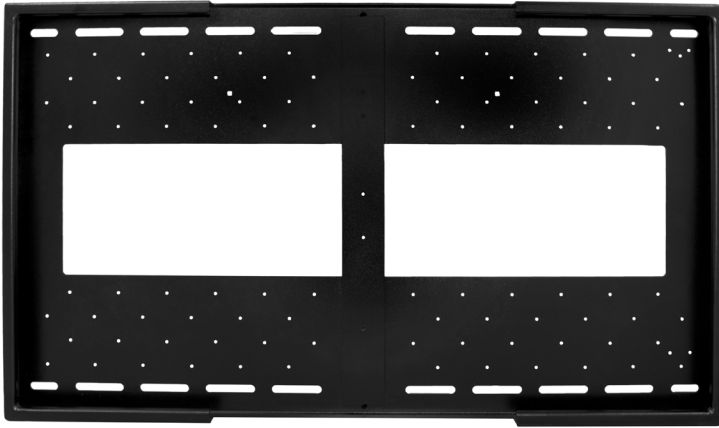
- Provides external wall support and eliminates the need to install internal wall backing.**
- Can be centered on the wall regardless of stud location
- Patented open design allows cooling by in-room HVAC so no need for active cooling system.
- Additional articulated mounts extend out for tech to access equipment for servicing.
- 49"+ Standard is for mounting above furniture or in non-egress pathways.

SPECIFICATIONS	
DIMENSIONS	42.27" X 23.87" X 4.67" (1073.65mm X 606.22 X 118.69)
NUMBER OF RACK UNITS	6
WEIGHT	35 LB (15.9 KG)
MIN # OF STUDS REQUIRED	2
DISPLAY SIZE COMPATIBILITY	49" - 65" 1m 24cm - 1m 65cm
DISPLAY WEIGHT LIMIT	75 LB (34.1 KG)
ADDITIONAL MOUNT REQUIRED	CHIEF TS218SU
MATERIAL	11-GAUGE STEEL
FINISH	MATTE BLACK POWDER COAT
MFR PART #	SET-49-STANDARD
INSTALLATION	Simple, Easy, Efficient
ADA COMPLIANT	NO

**WITH APPROVAL FROM SITE'S STRUCTURAL ENGINEER.

ROOMREADY SET - 49"+ STANDARD DIMENSIONAL DRAWINGS





FEATURES:

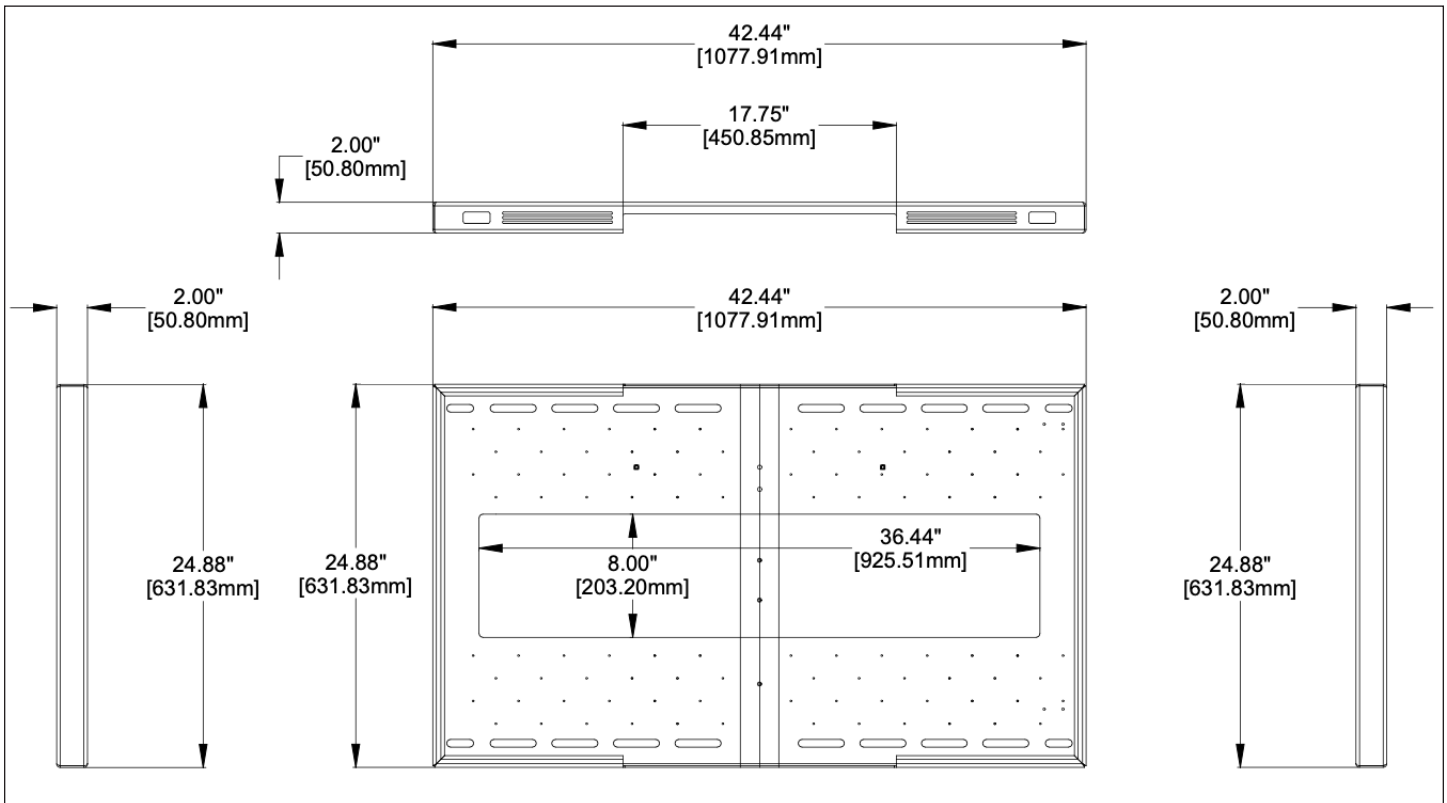
- Provides external wall support and eliminates the need to install internal wall backing.**
- Can be centered on the wall regardless of stud location
- Patented open design allows cooling by in-room HVAC so no need for active cooling system.
- The Chief TS218SU articulating mount allows for tech to access equipment for servicing behind the display.
- 49"+ Slim can achieve ADA requirements of 4" (10.16cm) depth with the use of certain displays and is intended for use in egress pathways and with no furniture under the display.

SPECIFICATIONS	
DIMENSIONS	42.44" X 24.88" X 2.00" (1077.91mm X 631.83 X 50.80)
NUMBER OF RACK UNITS	0
WEIGHT	29 LB (13.2 KG)
MIN # OF STUDS REQUIRED	2
DISPLAY SIZE COMPATIBILITY	49"- 65" (1m 24cm - 1m 65cm)
DISPLAY WEIGHT LIMIT	100LB (45.4 KG) WITH MTTU 75LB (34.1 KG) WITH TS-218SU
ADDITIONAL MOUNT REQUIRED	CHIEF TS218SU OR MTTU
MATERIAL	11-GAUGE STEEL
FINISH	MATTE BLACK POWDER COAT
MFR PART #	SET-49-SLIM V4
INSTALLATION	Simple, Easy, Efficient
ADA COMPLIANT	YES*

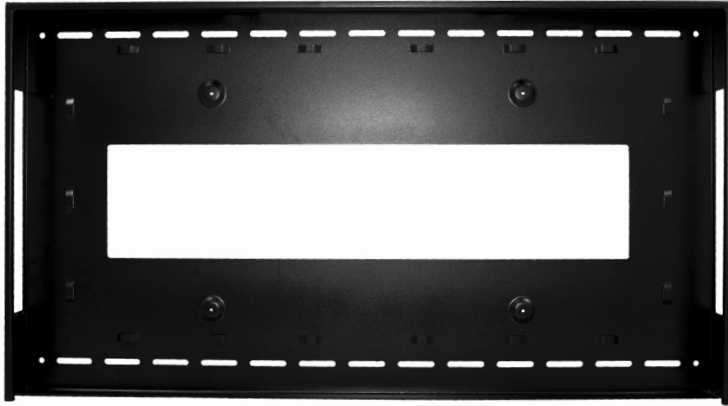
*WITH THE USE OF CERTAIN DISPLAYS.

**WITH APPROVAL FROM SITE'S STRUCTURAL ENGINEER.

ROOMREADY SET - 49"+ SLIM DIMENSIONAL DRAWINGS



ROOMREADY SET - 65"+ STANDARD MFR PART # SET-65-STANDARD



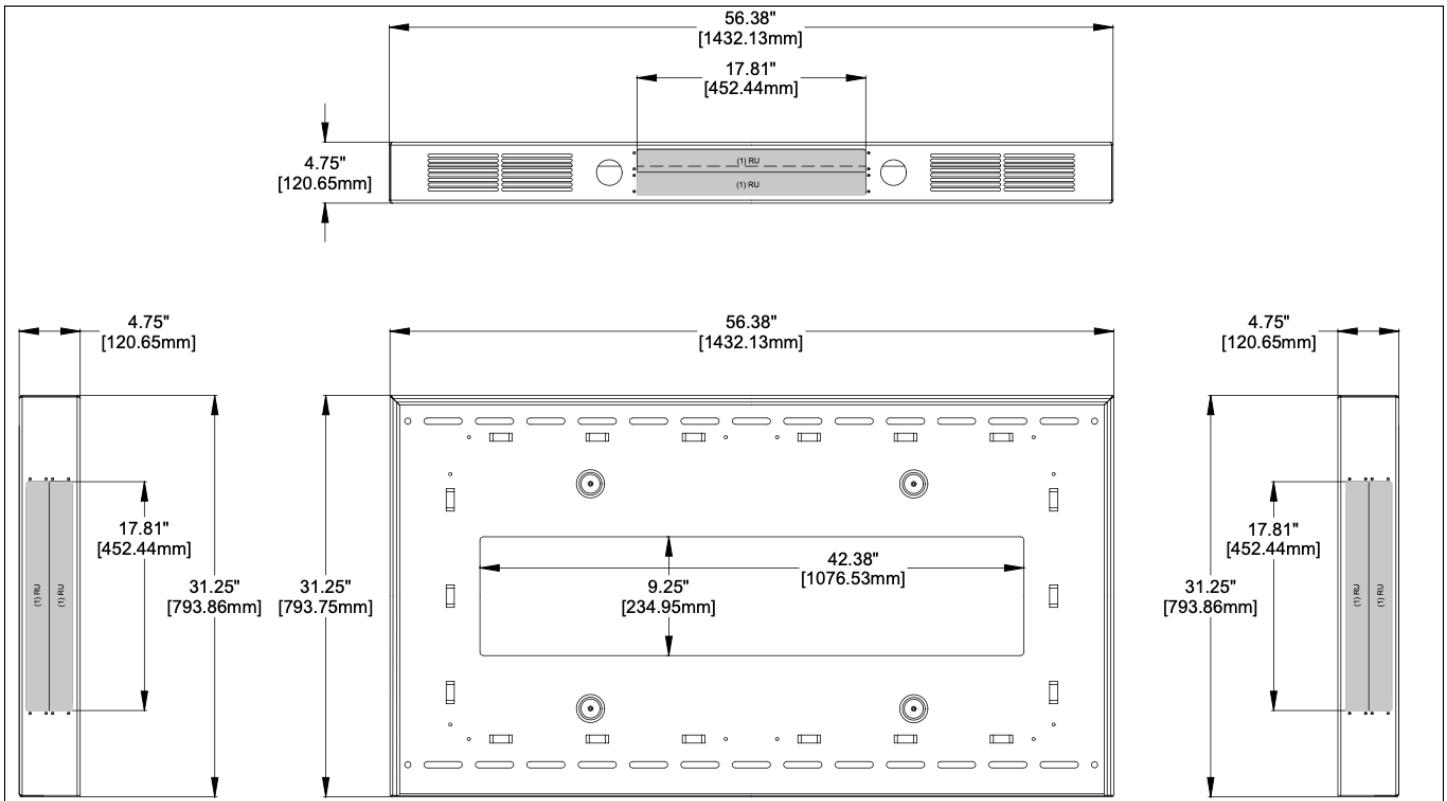
FEATURES:

- Provides external wall support and eliminates the need to install internal wall backing.**
- Can be centered on the wall regardless of stud location
- Patented open design allows cooling by in-room HVAC so no need for active cooling system.
- Additional articulated mounts extend out for tech to access equipment for servicing.
- 65"+ Standard is for mounting above furniture or in non-egress pathways.

SPECIFICATIONS	
DIMENSIONS	56.38" X 31.25" X 4.75" (1442.13mm X 793.86 X 120.65)
NUMBER OF RACK UNITS	6
WEIGHT	49 LB (22.3 KG)
MIN # OF STUDS REQUIRED	3
DISPLAY SIZE COMPATIBILITY	65"-84" 1m 63cm-2m 11cm
DISPLAY WEIGHT LIMIT	150 LB (68.1 KG)
ADDITIONAL MOUNT REQUIRED	CHIEF LTM1U + FCAV1U
MATERIAL	11-GAUGE STEEL
FINISH	MATTE BLACK POWDER COAT
MFR PART #	SET-65-STANDARD
INSTALLATION	Simple, Easy, Efficient
ADA COMPLIANT	NO

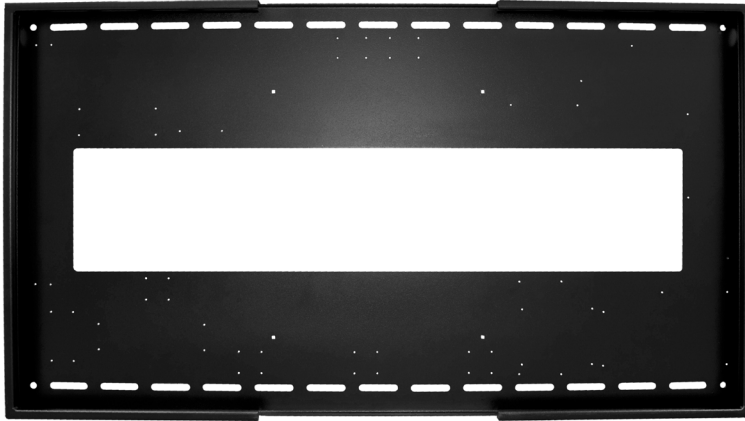
**WITH APPROVAL FROM SITE'S STRUCTURAL ENGINEER.

ROOMREADY SET - 65"+ STANDARD DIMENSIONAL DRAWINGS



ROOMREADY SET - 65"+ SLIM

MFR PART #SET-65-SLIM



FEATURES:

- Provides external wall support and eliminates the need to install internal wall backing.**
- Can be centered on the wall regardless of stud location
- Patented open design allows cooling by in-room HVAC so no need for active cooling system.
- Additional articulated mounts extend out for tech to access equipment for servicing.
- 65"+ Slim can achieve ADA requirements of 4" (10.16cm) depth with the use of certain displays and is intended for use in egress pathways and with no furniture under the display.

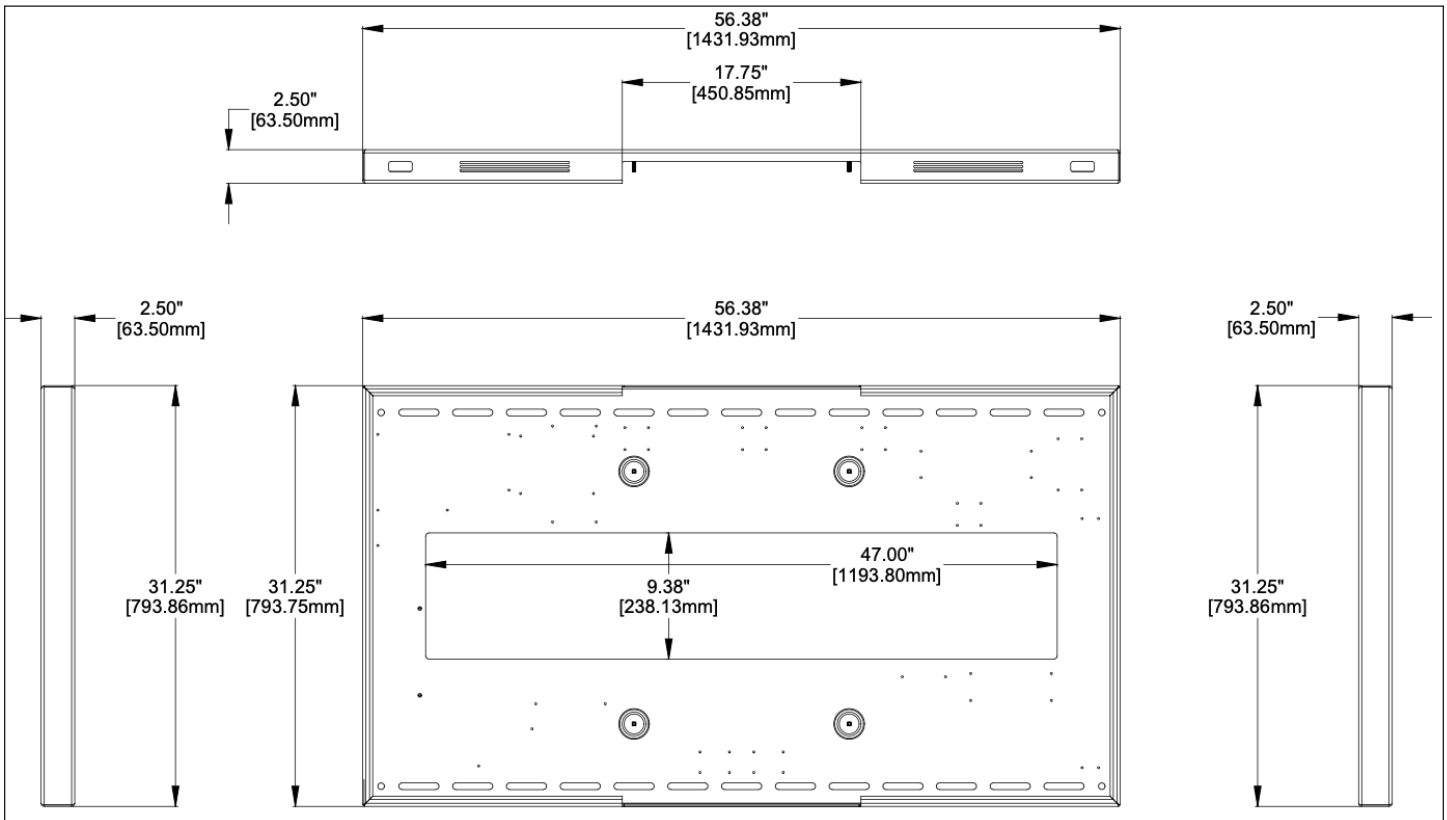
SPECIFICATIONS

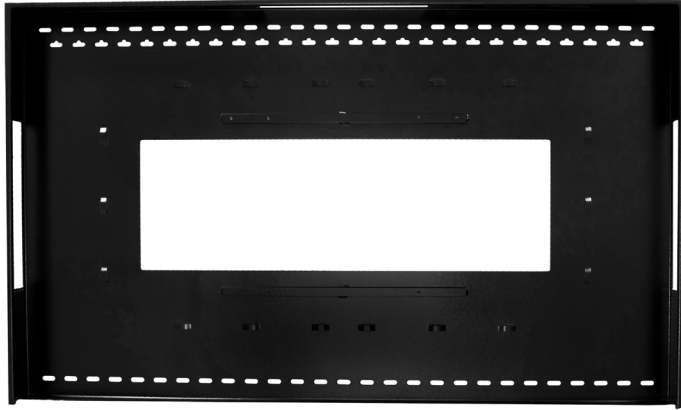
DIMENSIONS	56.38" X 31.25" X 2.50" (1431.93mm X 793.75 X 63.50)
NUMBER OF RACK UNITS	0
WEIGHT	53 LB (24.1 KG)
MIN # OF STUDS REQUIRED	3
DISPLAY SIZE COMPATIBILITY	65"-84" 1m 63cm-2m 11cm
DISPLAY WEIGHT LIMIT	125 LB (56.7 KG)
ADDITIONAL MOUNT REQUIRED	CHIEF LTM1U + TS525TU
MATERIAL	11-GAUGE STEEL
FINISH	MATTE BLACK POWDER COAT
MFR PART #	SET-65-SLIM
INSTALLATION	Simple, Easy, Efficient
ADA COMPLIANT	YES*

*WITH THE USE OF CERTAIN DISPLAYS.

**WITH APPROVAL FROM SITE'S STRUCTURAL ENGINEER.

ROOMREADY SET - 65"+ SLIM DIMENSIONAL DRAWINGS





FEATURES:

- Provides external wall support and eliminates the need to install internal wall backing.**
- Can be centered on the wall regardless of stud location
- Patented open design allows cooling by in-room HVAC so no need for active cooling system.
- Additional articulated mounts extend out for tech to access equipment for servicing.
- 84"+ Standard is for mounting above furniture or in non-egress pathways.

SPECIFICATIONS	
DIMENSIONS	70.00" X 42.00" X 4.75" (1778.00mm X 1066.80 X 120.65)
NUMBER OF RACK UNITS	6
WEIGHT	95 LB (43.1 KG)
MIN # OF STUDS REQUIRED	3
DISPLAY SIZE COMPATIBILITY	84"-98" 2m 11cm-2m 49cm
DISPLAY WEIGHT LIMIT	300 LB (136.1 KG)
ADDITIONAL MOUNT REQUIRED	PREMIER AM-300B
MATERIAL	11-GAUGE STEEL
FINISH	MATTE BLACK POWDER COAT
MFR PART #	SET-84-STANDARD
INSTALLATION	Simple, Easy, Efficient
ADA COMPLIANT	NO

**WITH APPROVAL FROM SITE'S STRUCTURAL ENGINEER.

ROOMREADY SET - 84"+ STANDARD DIMENSIONAL DRAWINGS

